



BAIT AL ARAB

KUWAIT STATE STUD



LATIEFA

A FOUNDATION MARE FOR THE
ARABIAN HORSE CENTER - BAIT AL ARAB

LATIEFA (1993 - 2011)

BY HAMASA KHAZZAN X HAMASA TARIFA BY FARAG.

BRED AND OWNED BY THE ARABIAN HORSE CENTER

STRAIN: DAHMEH SHAHWANIEH (EL DAHMA) SABAH - BINT BUKRA FAMILY

Lamia Elkuwait
(Ansata Hejazi x
Latiefa)



Larien Elkuwait
(Ajmal Ashhal x Lamia
Elkuwait)



After the liberation of Kuwait in 1991 the authorities decided to reestablish the breeding program at the governmental owned Arabian Horse Center, some fine mares were purchased in 1992 from Dr. Olms, Hamasa Arabian Stud, Germany. Among them was Hamasa Tarifa, an attractive, refined grey broodmare by Farag x Mehna by Mohawed, tracing back through Nagwa to Bint Bukra (EAO). As per advise of the purchasing committee the mare was bred to Hamasa Khazzan (Kasr El Nil x Nafteta by Kaisoon), a stallion of Saglawi Jedran Ibn Sudan (Om Dalal) Moniet El Nefouse lineage. Hamasa Tarifa was imported to Kuwait in foal. In May 1993 a beautiful filly was born and named Latiefa. She developed into a very lovely snow-white mare. Latiefa became a foundation mare for the Arabian Horse Center and was able to establish her own significant family.

In type and conformation she was stamped by her grand sire, the Morafic son Farag. She was a tall, elegant mare with long but strong lines. She had a very refined head, a broad forehead and a good eye. Her neck was nicely shaped with a clean throat. She had a deep, wide chest and a strong croup and hind legs. Her movement was exceptional with long strides, powerful and she carried herself very proudly. She had a great charisma, a very charming attitude and was the leader of the group of broodmares at Bait Al Arab.

Her daughters, Lamia Elkuwait and Layali Elkuwait, both by Ansata Hejazi, as well as Layla Elkuwait by Adnan, have proven to be of great value as broodmares for Bait Al Arab.

Latiefa's family is the biggest of all families at Bait Al Arab. The family is known for the special charm and charisma. All the daughters, grand daughters and grand grand daughters of Latiefa are similar in type and conformation. Bait Al Arab is fortunate to have the Latiefa family as an important part of the breeding program.

Layali Elkuwait
(Ansata Hejazi x
Latiefa)



Salma Elkuwait
(Ansata Osiron x
Layali Elkuwait)



Layla Elkuwait (Adnan
x Latiefa)

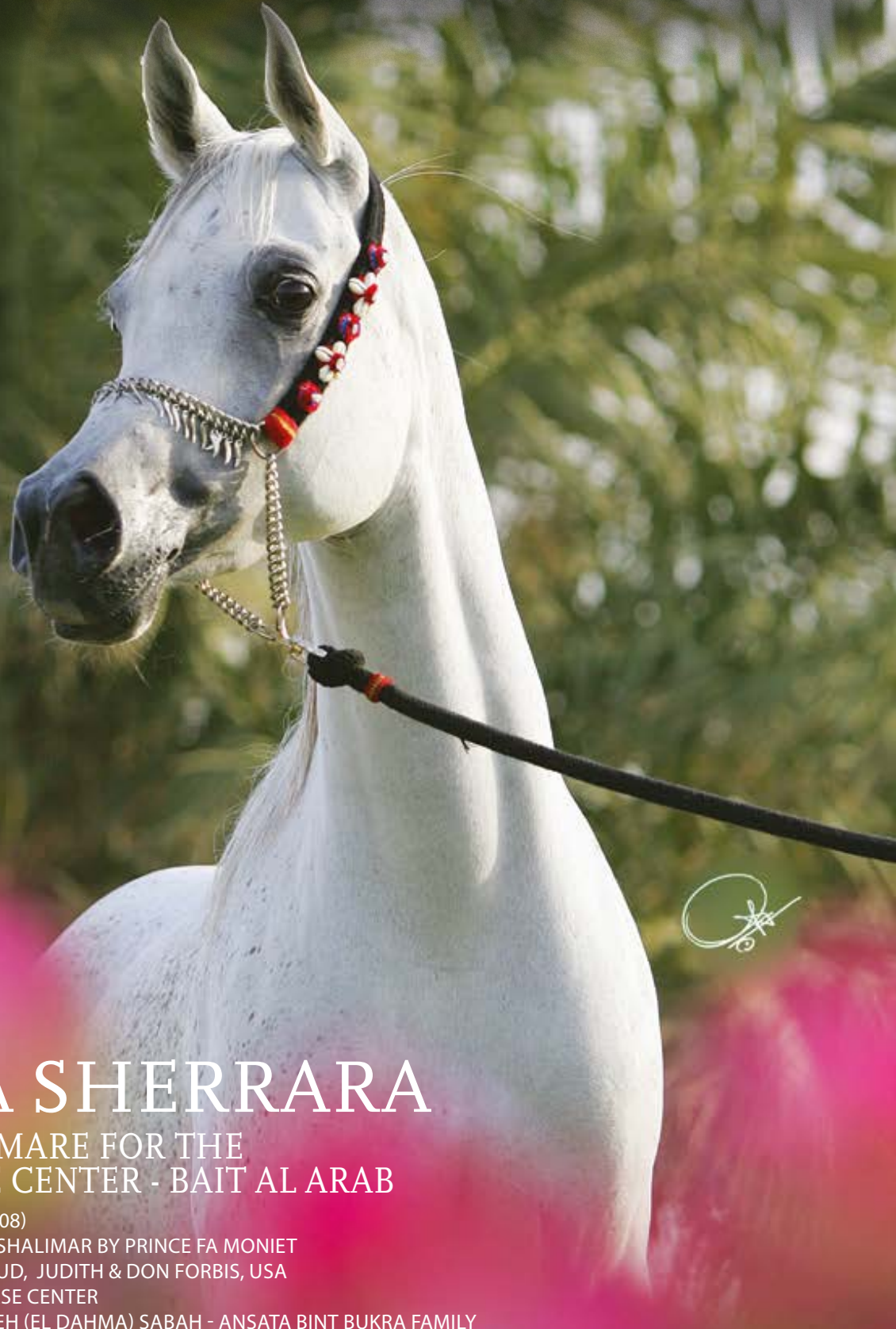
Lulua Elkuwait
(Ansata Hejazi x Layla
Elkuwait)





BAIT AL ARAB

KUWAIT STATE STUD



ANSATA SHERRARA

A FOUNDATION MARE FOR THE
ARABIAN HORSE CENTER - BAIT AL ARAB

ANSATA SHERRARA (1998 - 2008)

BY ANSATA HEJAZI X ANSATA SHALIMAR BY PRINCE FA MONIET

BRED BY ANSATA ARABIAN STUD, JUDITH & DON FORBIS, USA

OWNED BY THE ARABIAN HORSE CENTER

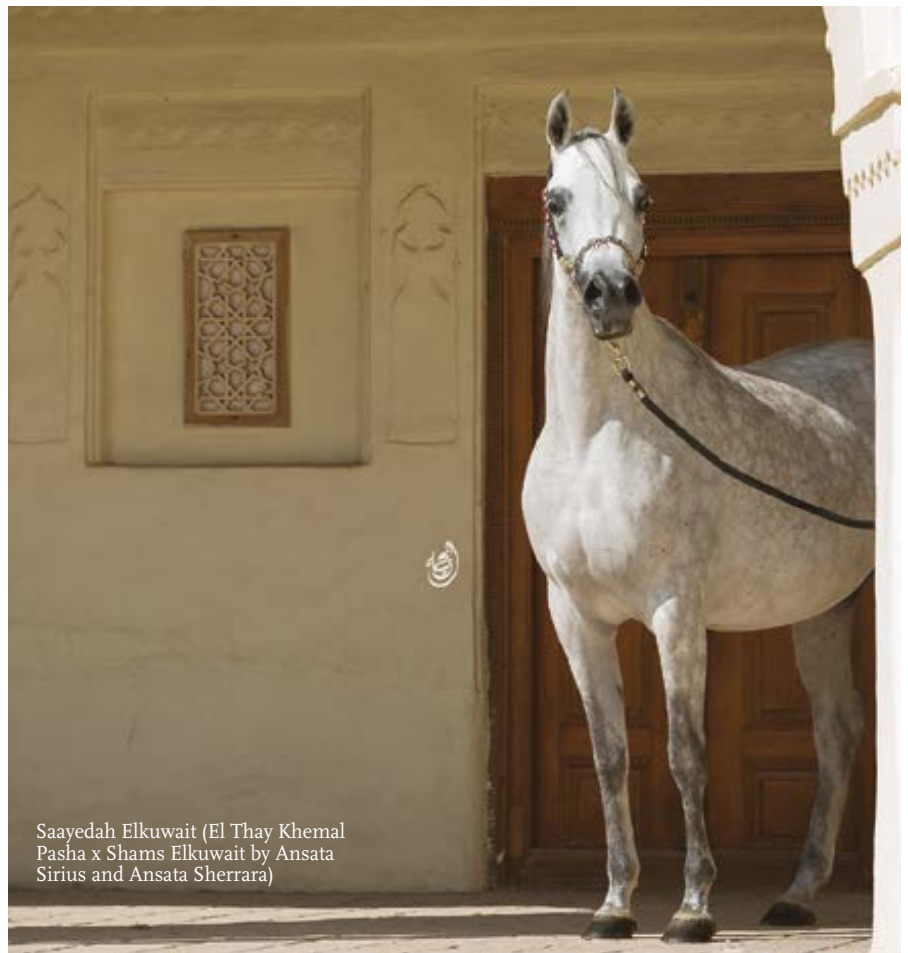
STRAIN: DAHMEH SHAHWANIEH (EL DAHMA) SABAH - ANSATA BINT BUKRA FAMILY

Saayedah Elkuwait, born 2011, by El Thay Khemal Pasha,
 Sarah Elkuwait, born 2003, by Adnan,
 Shams Elkuwait, born 2004, by Ansata Sirius



When in 1997 the Arabian Horse Center was placed under the umbrella of the Hunting and Equestrian Club, it was decided to enhance the quality of the breeding stock by purchasing some high quality mares. A budget was set for the Center to acquire more Arabian horses. The primary goal of this endeavor was to improve the quality and type of horses at the Center, and to establish a group of the best producing strains and families, building particularly on the El Dahma line of the Dahman Shahwan strain through the Farida and the Sabah families as a foundation. Two of the best mares already at the Center were of the Sabah/Bukra family: the beautiful-headed Latiefa and her dam, Hamasa Tarifa. The Sabah and Farida families had proven a successful foundation for Ansata over the years, along with other lines that blended well with this strain.

The filly ANSATA SHERRARA (Ansata Hejazi x Ansata Shalimar by Prince Fa Moniet) was the only female with a line to Ansata Bint Bukra which was available for purchase for the committee at this time. She was imported in 1999 as a yearling. Her pedigree shows the well proven nick between Ansata Hejazi and Prince Fa Moniet. She became a strong foundation mare for the Center and has founded a dynasty of her own. In type and conformation she, as well as her daughters - although being from different sires - represent in an excellent way the characteristics and features for which the Ansata Bint Bukra family is known and respected world wide. They show refined type with short heads, small ears, eyes set well apart, well shaped necks of a length which fits well proportioned with the compact body, a super topline and croup and powerful movement.



Saayedah Elkuwait (El Thay Khemal Pasha x Shams Elkuwait by Ansata Sirius and Ansata Sherrara)



BAIT AL ARAB

KUWAIT STATE STUD

ANSATA MERYTA

A FOUNDATION MARE FOR THE ARABIAN HORSE CENTER - BAIT AL ARAB

ANSATA MERYTA (1988 - 2005)

BY ANSATA HALIM SHAH X JKB MASOUDA BY MADKOUR

BRED BY ANSATA ARABIAN STUD, JUDITH & DON FORBIS, USA

OWNED BY THE ARABIAN HORSE CENTER, KUWAIT

STRAIN: DAHMEH SHAHWANIEH (EL DAHMA) SABAH – FARIDA / HALIMA FAMILY





Maha Elkuwait,
Mayyasah Elkuwait,
Mesk Elkuwait



Madinah Elkuwait (Mishaal HP
x Mesk Elkuwait)



Mashaal
Elkuwait
(Ghazal
Elkuwait
x May
Elkuwait)



Marwan Elkuwait
(Ajmal Al Kout x
Mesk Elkuwait)



Maha Elkuwait
(Ansata Hejazi
x Mzoon
Elkuwait)

Of the Dahman Shahwan strain tracing back to El Dahma DB, there are two major families: that of Obeya with the main branches of Layla and Bukra, and that of Farida with the main branches of Bint Farida and Halima. Though it was the Bint Farida branch that continued the family at El Zahraa in Egypt, it is the Halima family that has the greater significance on a global scale.

Halima was foaled in 1944 at the Royal Agricultural Society's stud in Egypt. She was by Sheikh El Arab, who was himself a Dahman Shahwan of the Obeya family. Her dam Ragia was a daughter of Ibn Rabdan out of Farida, who traced back in three generations to Ali Pasha Sherif's original desertbred El Dahma.

Her son, the legendary Ansata Ibn Halima by Nazeer founded his own worldwide dynasty in the USA. Her daughter Moheba by Sid Abouhom became a mare of central importance to worldwide straight Egyptian breeding. In 1955, she was sold to Germany in foal and delivered a filly named Malacha by El Sareei. Her greatest contribution to the breed were two full sisters sired by Ghazal (Nazeer x Bukra), himself a Dahman Shahwan: Moheba II, foaled in 1960, and Malikah, foaled in 1962.

Malikah had a huge influence to the breed. Her daughter Maymoonah by Hadban Enzahi was exclusively bred to the Morafic son Madkour, who was also a Dahman Shahwan, but from a different family. One of the most successful daughters was JKB Masouda who went to Jean Kayser's stud farm in Luxemburg and later to Ansata Arabian Stud. Her two most important daughters were Ansata Malika by Jamil and Ansata Meryta by Ansata Halim Shah, Ansata Meryta was sold to the State Stud of Kuwait, the Arabian Horse Center - Bait Al Arab (imported in 1999) where she became very influential through her daughters Mzoon Elkuwait and Manar Elkuwait, both by Shahin.

The two full sisters were different in type and conformation but produced excellent foals especially when bred to Ansata Hejazi. Mzoon Elkuwait had two daughters by him, Mesk Elkuwait and Maha Elkuwait. Manar had one daughter by Ansata Hejazi named Mayyasah Elkuwait.



Mariyam Elkuwait
(Ajmal Ashhal x
Manar Elkuwait)



BAIT AL ARAB

KUWAIT STATE STUD

ANSATA WHITE NILE

A FOUNDATION MARE FOR THE
ARABIAN HORSE CENTER - BAIT AL ARAB

ANSATA WHITE NILE (1990 - 2009)

BY PRINCE FA MONIET X ANSATA NILE GIFT BY ANSATA IBN SUDAN

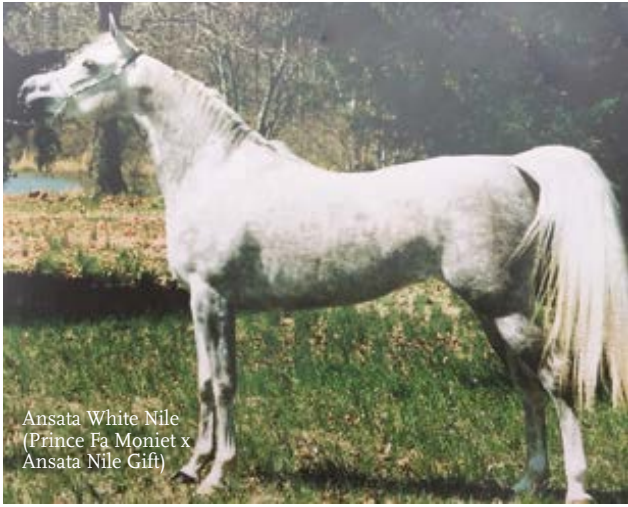
BRED BY LEONOR ROMNEY, USA

OWNED BY THE ARABIAN HORSE CENTER, KUWAIT

STRAIN: DAHMEH SHAHWANIEH (EL DAHMA) - SABAH - FALIMA / NILE



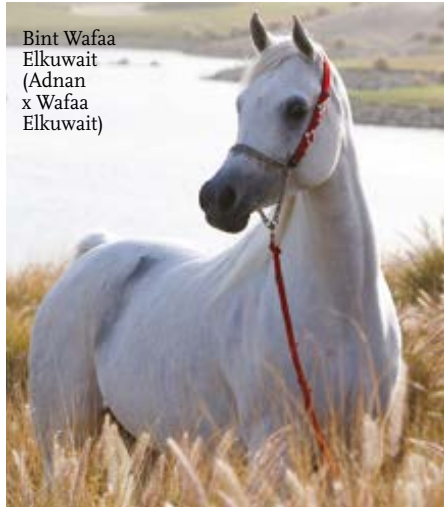
Jil © 2001



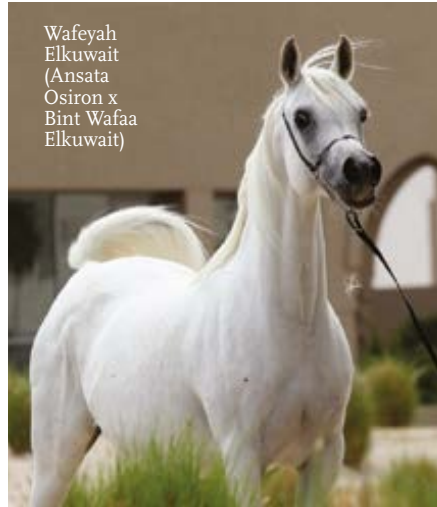
Ansata White Nile
(Prince Fa Moniet x
Ansata Nile Gift)



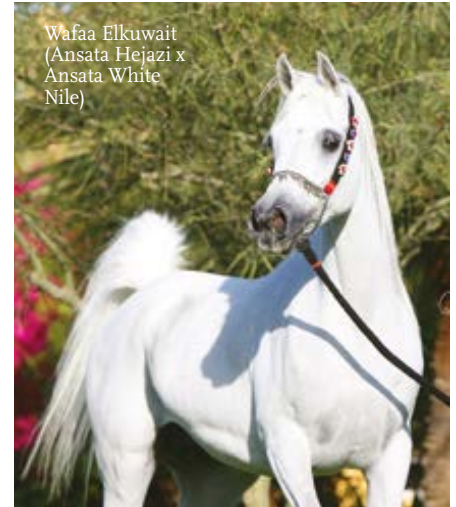
The full sisters Wafaa Elkuwait
and Wardah Elkuwait



Bint Wafaa
Elkuwait
(Adnan
x Wafaa
Elkuwait)



Wafeyah
Elkuwait
(Ansata
Osiron x
Bint Wafaa
Elkuwait)

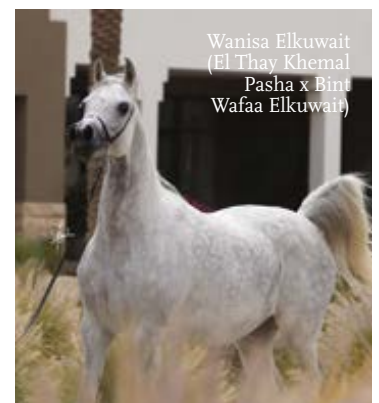


Wafaa Elkuwait
(Ansata Hejazi x
Ansata White
Nile)

The Arabian Horse Center and State Stud of Kuwait was founded in 1980 and rebuilt in 1991 after the 1st Gulf War. In 1992 some horses were imported from Germany, of which the mare Hamasa Tarifa through her daughter Latiefa by Hamasa Khazzan from the Dahman Shahwan (El Dahma) Strain of the Sabah – Bint Bukra family was able to found her own dynasty. In 1998 the decision was taken to acquire more Arabian horses for the Center. The primary goal was to improve the quality and type of the horses at the Center, and to establish a group of the best producing strains and families that could be purchased to build particularly on the El Dahma line of the Dahman Shahwan strain as a foundation. Just before Don and Judith Forbis were able to finalize the purchase of their trio of Nazeer yearlings from El Zahraa, they visited Henry Babson, who had imported his first Arabian horses from Egypt in the 1930s. These visits resulted in an exchange of breeding stock that made perfect sense. Mr. Babson was in need of an outcross, and the Forbises wanted to add some of the outstanding bloodlines that he had acquired. The Babson Farm received the stunning Ansata Abbas Pasha (Ansata Ibn Halima x Ansata Bint Mabrouka), who became a significant sire and champion for Babson and later for Bentwood Farm. Ansata received four Babson mares (El Maar, Fay Sabbah, Fa Aana, and Fa-Habba). The Babson mares were a well-bred group, but some of them were older and it was uncertain as to whether they could still produce. Fa Aana was very beautiful with a classic look, but a hopeless candidate. Fay Sabbah was old, foaled one colt by the Babson stallion she was in foal to and went sterile. El Maar delivered a significant filly for Ansata named Maarqada, by Fabah. The lucky star did shine, when Fa-Habba produced Falima.” Maarqada and Falima became a part of Ansata’s breeding program. However, Falima founded the family that became the longest maintained Babson female line at Ansata, and it was appropriately named the “Nile family.”



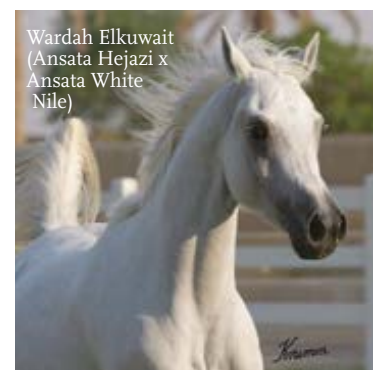
Waseem
Elkuwait
(Ansata Sirius
x Wafaa
Elkuwait)



Wanisa Elkuwait
(El Thay Khemal
Pasha x Bint
Wafaa Elkuwait)



Dana
Elkuwait
(Ansata
Osiron x
Wardah
Elkuwait)



Wardah Elkuwait
(Ansata Hejazi x
Ansata White
Nile)